

**POINT OF SALE AND PACKAGING**



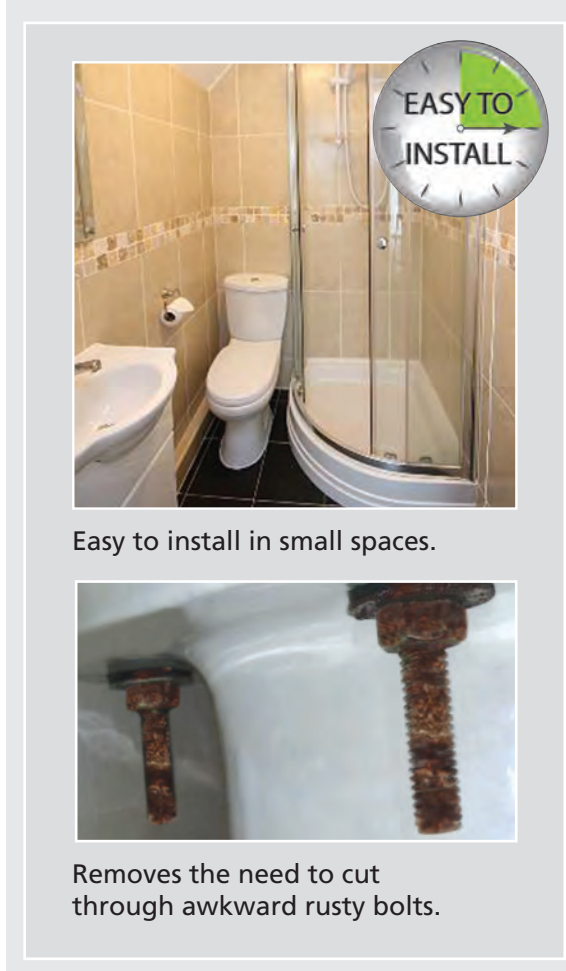
**AWARD WINNING**

Did you know?

Quick-fit has won 2 Innovation awards at the 2016 KBB exhibition.



**ADVANTAGES OF QUICK-FIT**



**Flushing Valve**

**QUICK-FIT**

Guarantee 10



The flush valve that saves you time!

**INSTALLATION WITHOUT REMOVING THE CISTERN**

**WATER SAVING**  
Dual flush



**TIME SAVING**  
Attaches directly to close coupled cisterns

> The NEW Revolution in the flushing world. QUICK-FIT is suitable for close coupled installations without removing the cistern.



**Macdee**  
**wirquin**  
Watch our  
**INSTALLATION**  
Video



M004 - 05/2016

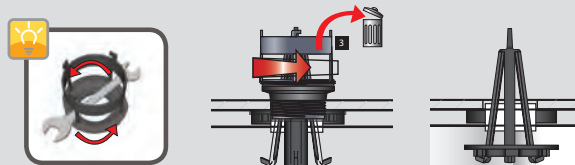
**Macdee**  
**wirquin**

► The only flush valve on the market that can be installed without removing the cistern!

## MOUNTING STEPS TO QUICK-FIT

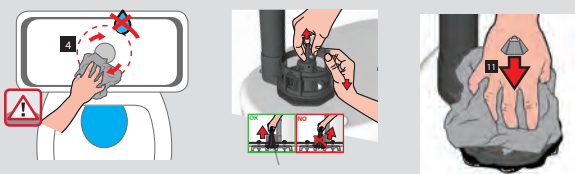
### Removal of base

Use suitable tool to loosen the old base and insert the backnut retaining holder. Remove the old base and discard.



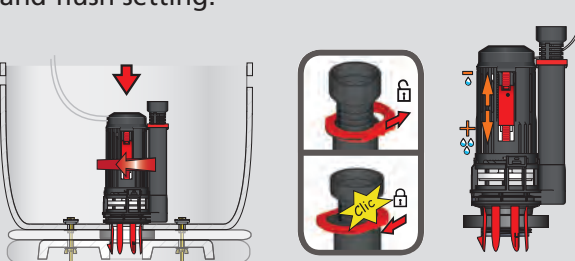
### Fitting of the flush valve base

Clean and dry the cistern surface. Press the base into place and remove backnut retaining holder. Press on the base for 30 seconds and leave for 3 minutes to seal.



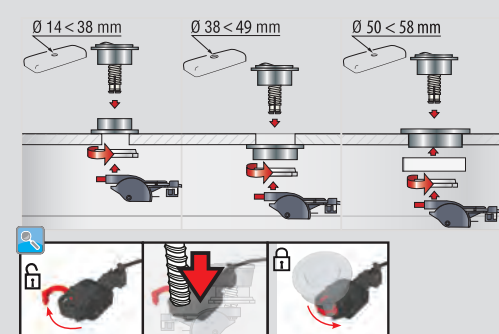
### Fitting flush valve

Clip into the flush valve base, set overflow and flush setting.



### Fitting the push button

Choose the correct fixing size for the cover hole and fit the easy clip button.



**CHROME BUTTON**  
Suitable for cover holes from Ø14 to Ø58mm

**EASYCLIP SYSTEM**  
Quick assembly and servicing

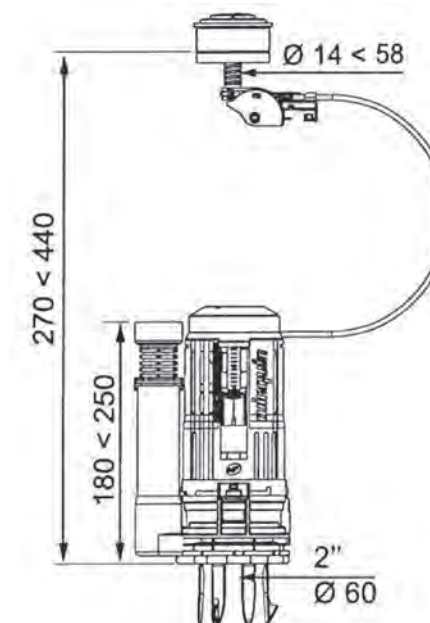
**TELESCOPIC OVERFLOW**  
Height adjustable

**BUTYL SEAL**  
Instant sealing

**INNOVATIVE SYSTEM**  
Can be installed without removing the cistern

## TECHNICAL CHARACTERISTICS

Type of Flush	Dual Flush 3/6L
Control Mechanism	Cable
Height of Cistern	270mm to 440mm
ø of cover hole	ø 14mm to ø58mm
Standard	Tested to 200,000 cycles
Guarantee	10 years
Reference	10721505



### Did you know?

The Butyl used on the Quick-Fit is also used for holding in car windscreens, waterproof membrane in wetrooms and swimming pool liners.